

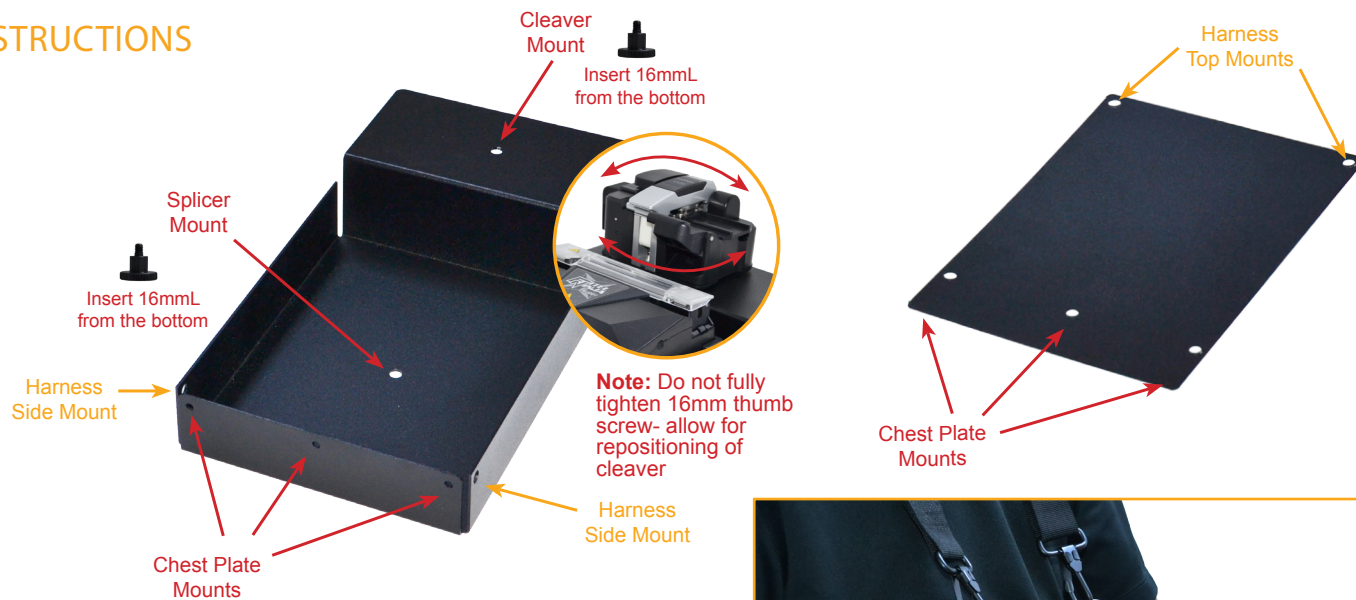
Part #: F1-FTLTRAY

KIT CONTENTS

- (2) 16mm Thumbscrews
- (3) Hex Nuts
- (3) Washers
- (4) Stainless Steel Split Rings
- (1) Chest Plate
- (1) Shoulder Strap (Harness A)
- (1) Waist Strap (Harness B)
- (1) Base Plate
- (3) Screws

The FIS All-In-One Tray, gives a technician the true meaning of a Handheld Fusion splicer. This tray allows the technician to hold the Fusion Splicer and cleaver in just one hand. This unique design securely fastens the Fusion Splicer to the base of the tray and allows the attached cleaver to rotate, making it easier to transfer both left and right side holders. When the job gets tough, attach the body tray and the harness belts to give the technician a hands free splicing experience.

INSTRUCTIONS



ASSEMBLING THE HARNESS

1. Place the chest plate mount in front of the All-In-One Tray and attach using the washer, hex nuts and screws.
2. Attach (2) of the stainless steel rings to the two Harness Top Mount holes of the chest plate. Then attached the remaining (2) Stainless steel rings to the Harness Side Mount holes on either side of the tray.
3. Attach Harness (A) to the top rings and attach to the chest plate. Place strap around your neck and adjust to size.
4. Attach Harness (B) on side rings connected to tray. Place around your waist.

