

ZONE MAPPING SOFTWARE INSTALLATION

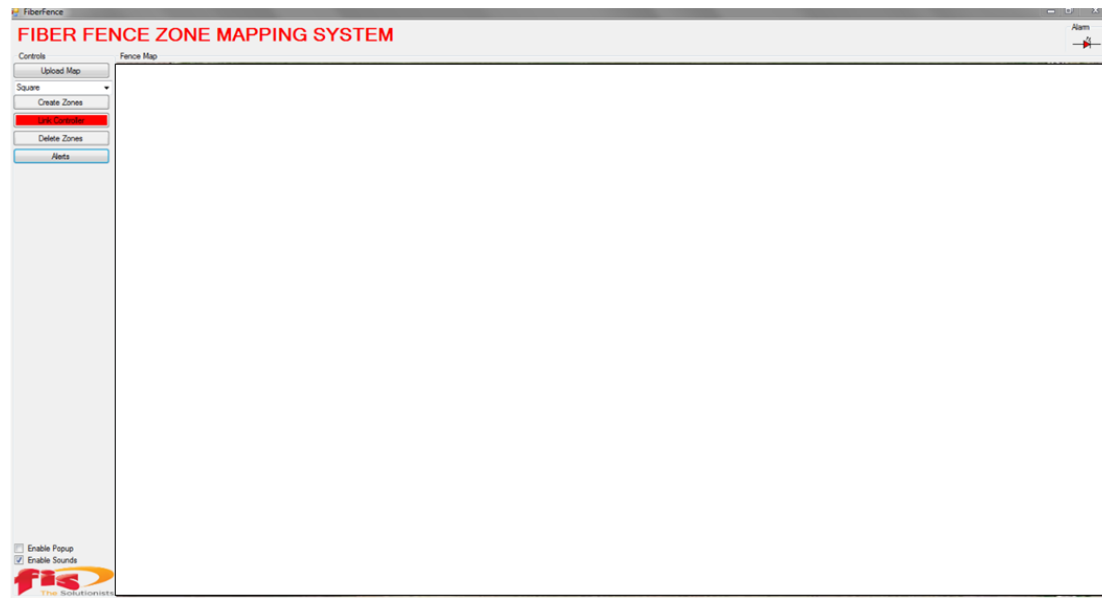
NOTE:

1. To set up the Zone Mapping software, your Fiber Fence installation must be on and calibrated. It should be all clear and showing green lights. If there is an alarm, that condition must be corrected before starting this process; or that Zone Control Unit and zone cannot be added to the mapping software.
2. This process will also require you to set off false alarms at the fence or Zone Control Unit to complete the links to your computer. If you have connected the Zone Control Units to an external bell, light or security system, you will also be setting off those connections. You may need to deactivate those connections until this set-up is complete.

Step 1: Using the thumb-drive provided, copy the file from the thumb-drive to the desktop of the Windows based PC you will use to monitor the Fiber Fence.

Open the file and double click on the “Set-Up” icon. The Home Screen will open.

Fig A: Home Screen



You will be using the menus on the Menu Bar located on the left side of the screen.

Fig B: Menu Bar

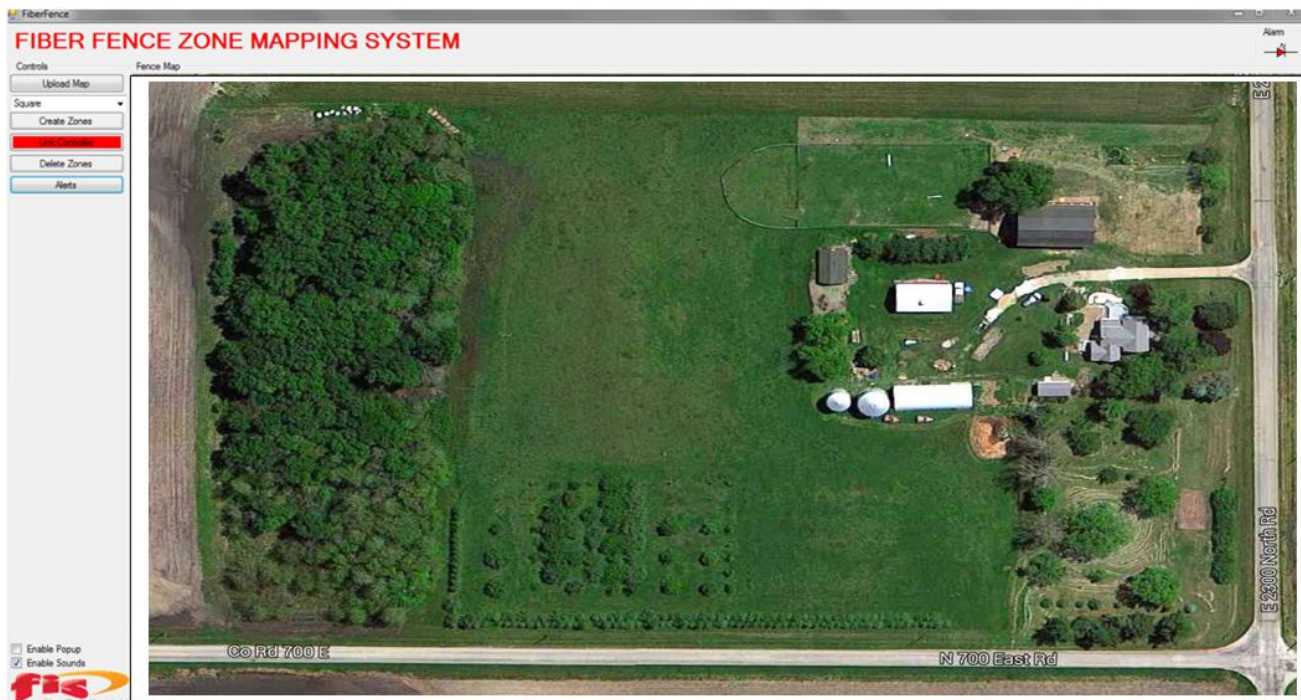


Step 2: Uploading Maps or Photos

Save an image or photograph of the property on your desktop. It can be any size but a large image will give the best clarity. It can be a photo, survey, area map, Google Image, hand-drawn or professionally done sketch scanned or down-loaded into your computer. The file type must be one of the following: *.jpeg; *.jpg;*.jpe; *.jfif; *.png.

Click on **Upload Map** and a window will open allowing you to select the map. It will now appear in the screen for the Fiber Fence Software.

Fig C: Home Screen with property graphic



Step 3: Creating Zones

You will now draw each zone on the map to match the zones you created with the fiber Fence. Each Zone Control Unit will be linked to the zone you draw on the map.

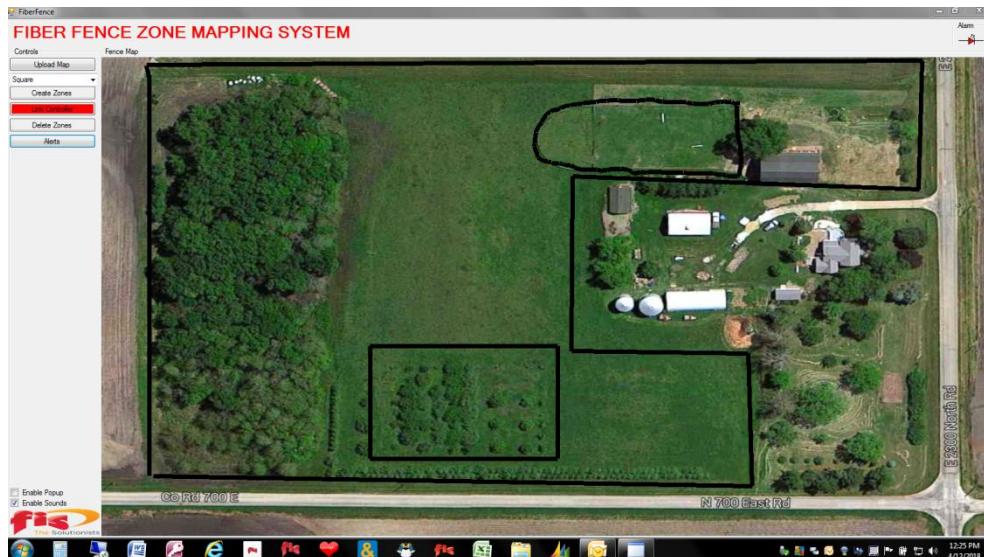
Click on the Create Zones button. Use the dropdown next to the menu button showing the word **Free** to draw zones on the map at the locations where you have installed the fence and/or gates.

Free: Allows you to draw a zone freehand in any shape like using a pencil. Click the right mouse button and hold it down to draw the shape of the zone.

Line: Allows you to draw a single line as a zone. Lines can be long to create fence lines and short to represent a gate. The zone starts when you click and hold the right mouse button and ends when you release the button. Lines can touch from end to end to show zones that are attached to one another.

Square: Allows you to start at a corner and create a single, 4 sided zone. At the starting corner click and hold the left mouse button and drag the mouse to create a 4 sided square or rectangle.

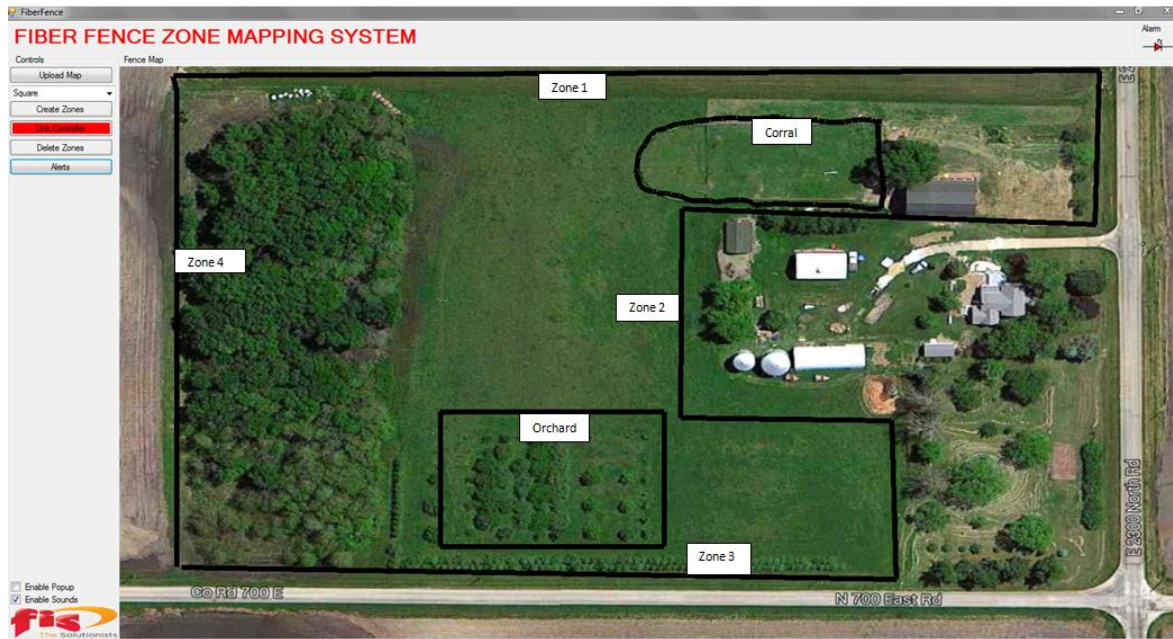
Fig D: Home Screen with zones



Step 4: Labeling Zones

You can add labels that will appear on each zone. Click on any zone line at the point where you want the label and a window will open allowing you to type in a name. When you click enter from that window, the label will appear. To change the location of the label, create a new one at the point where you want it and the old one will disappear.

Fig E: Home Screen with zones and labels



Step 5: Linking the Zone Control Unit

Now you will link each Zone Control Unit to the corresponding zone you created on the image in the software.

- Click on the **Link Control Unit** button. It will turn “red”. Click on one of the zones you created on the image. It will turn from “black” to “gray”.
- Set off the alarm at the Control Unit by carefully and slowly flexing, pulling, or bending the fiber. **DO NOT BREAK THE FIBER.** Stop as soon as the Control unit goes off and it should clear (return to a green light). You can also disconnect one of the connectors on the back of the zone Control Unit. Turning off the Squelch control can create an alarm but it cannot be used for this set-up.
- Nothing will appear on the computer screen.
- Move on to the next zone on the map and follow the same procedure. You will see that each of the previous zones will turn back to “black” as you move from one to the other.

Step 6: Optional Text and Email Alert Messages

If you have an internet connection to your computer, you can also have text and/or email alert notifications sent to another computer or cell phone.

Click on the “Alerts” menu button and the “FrmAlertPanel” will open.

The screenshot shows the 'FrmAlertPanel' window with the following sections:

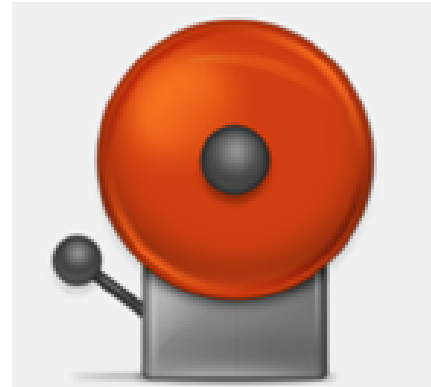
- Setup Email Server:** Includes text boxes for 'Email Server' and 'Auth Token', an 'Enable Email' checkbox, and a 'Save Email' button.
- Setup SMS Server:** Includes text boxes for 'SMS Server', 'Account SID', 'Auth Token', and 'SMS From #', an 'Enable SMS' checkbox, and a 'Save SMS' button.
- Add Email:** Includes an 'Email Address' text box and an 'Add' button.
- Text Message:** Includes a 'Country Code + 10 Digit Phone #' text box and an 'Add' button.
- Recipient Addresses / Numbers:** A large empty text area for listing recipients, with a 'Save' button at the bottom right.

To set up email alert messages, type the email address in the “Add Email” window and click the “Add” button. You will see the address appear in the “Recipient Addresses / Numbers” window at the bottom of the panel. You can enter as many email addresses as you need.

For text messages, enter the 10 digit phone number in the “Text Message” window and click the “Add” button. The phone number will also appear in the “Recipient Addresses / Numbers” window at the bottom of the panel. You can enter as many phone numbers as you need.

Step 7: Testing

At the bottom of the menu bar there are 2 controls you should activate for testing. They enable the visible alarm bell image that will pop-up on the screen when an alarm goes off, and for the audible alarm sound from the computer. For testing, check each box.



Individually set-off each zone at the fence location or Zone Control Unit. Do it quickly so that the Control Unit goes off and immediately resets. The alarm bell pop-up will show on the screen, the computer alarm sound will activate, and the zone on the map will change from “black” to “red”. This is similar to a condition that happens when an older fence moves with the wind –it will be a quick alarm and reset.

The Control Unit has reset and the computer zone will reset as soon as you close the Alarm Bell popup window.

If you set up text or email messages, an alert message will be sent for each false alarm created by this testing, and an all clear message will be sent when it returns to green.

The Fiber Fence and software are now working together.

Step 8: Monitoring Conditions

Depending on the age of the fence, and changing weather conditions, you may experience quick on and off alerts caused by the fence and fiber moving. The Zone Control Unit will show an alert, the relay will trip, and the software will show an alert. The Zone Control Unit will quickly return to green.

The pop-up on the computer screen will stay on until closed, and the alert and all clear messages will be sent.

This is done intentionally to provide the maximum level of protection.

You can eliminate part or all of these alerts by turning the Squelch slightly higher (clockwise).

WARNING: If you turn the Squelch to high you can cut off all alerts except a broken fiber and will have the minimum or no level of protection.



Fiber Fence Installation Instructions



RESETTING and RESTORING THE FENCE

When the alarm indicates an intrusion or fence destruction, the Zone Control Unit and computer software will not reset. Text or email alert message will be sent.

When the fence is ready to be restored, turn off the Zone Control Unit, repair the fence and fiber, and re-start the Control Unit following the instructions shown in Section IV.

To reset the software, close and reopen the program.

NOTE: If text and alert emails are used there will be no all clear message sent. It will be the responsibility of the on-site responders to contact those individuals and provide them with a status update regarding the repair of the fence.