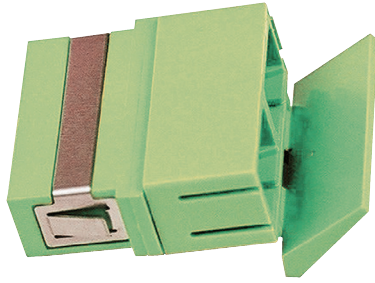
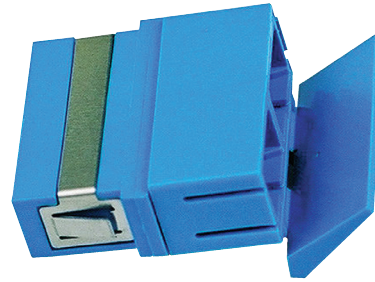


# FIS SC DUPLEX MATING SLEEVES WITH SHUTTER



**F1-SCRDAPC**



**F1-SCRD**

The FIS SC adapters are designed for optimal performance. We offer a bronze sleeve version for PC connectors. The zirconia sleeve versions are designed for high end UPC and APC applications

Applications include CATV, Data Communications and telecommunications networks.

## SPECIFICATIONS

<b>Body</b>	ABS Thermoplastic
<b>Housing color</b>	F1-SCRD: Blue, F1-SCRDAPC: Green
<b>Operating Temperature</b>	-40°C to 85° C
<b>Excess Loss</b>	< or = .1dB
<b>Split Sleeve</b>	Zirconia
<b>F1-SCRD</b>	
<b>F1-SCRDAPC</b>	

## TECH DRAWING

