

Pretium® Connector Housing (PCH)

four rack units, holds 12 CCH connector panels

CORNING

The rack-mount Pretium® connector housings (PCH) are available in 1U, 2U and 4U sizes and mount in 19-in racks or cabinets. Combined with the modules, panels, harnesses, trunks and jumpers, they provide a tip-to-tip solution for your fiber optic network.

Features and Benefits

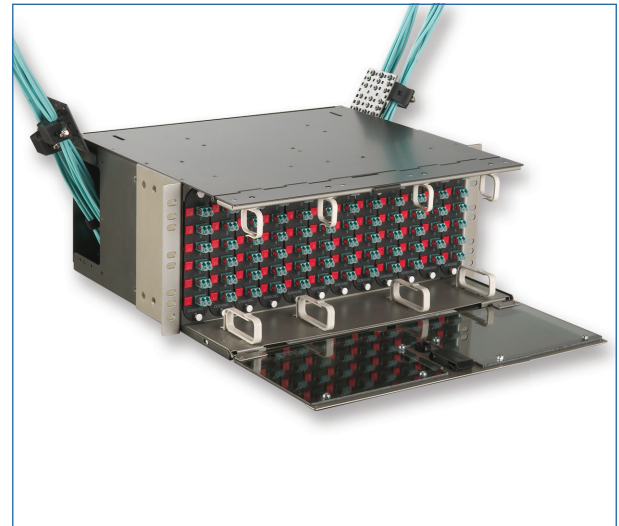
Compatible with Plug & Play™ Systems modules
Designed to support Plug & Play Systems applications

Splice in the housing
Saves rack space and the cost of the second housing

Removable top (1U, 2U)
Maximizes ease of access

Transparent front door (04U and 02U)
Permits viewing while protecting installed patch cords

Large removable fiber guides in front
Effectively manage high patch cord densities



Example of a fully loaded/equipped PCH-04U Housing

Standards

RoHS	Free of hazardous substances according to RoHS 2011/65/EU
UL-Listed	United States and Canadian safety standards



Part Number: PCH-04U

CORNING

Pretium® Connector Housing (PCH)

four rack units, holds 12 CCH connector panels



Specifications

General Specifications	
Application	Enterprise Networks, Data Center
Mounting Type	Rack 19-in, Rack 23-in
Product Type	Rack-Mountable Hardware

Design - Hardware	
Housing Type	PCH
Housing Color	Gray
Fiber Capacity	Up to 144 fibers installing FC/SC/ ST® Compatible connectors, or up to 288 installing LC connectors
Height Unit	4U
Locking Availability	Front or rear
Number of Panels per Housing	12
Panel or Module Type	CCH
Splice Tray Options	Splice trays can be used with optional PC4-GOV-SPLC or PC4-SPLC-12SR splice tray holder.

Mechanical Characteristics	
Dimensions (W x D x H)	431.8 mm x 406.4 mm x 177.8 mm (17 in x 16 in x 7 in)

Ordering Information

Part Number	PCH-04U
Product Description	Pretium® Connector Housing, 4 rack units, holds 12 CCH connector panels
EAN Code	4056418200767

Shipping Information

Units per Delivery	1/1
Packaging Dimensions (W x D x H)	562.1 mm x 482.6 mm x 279.4 mm (22.13 in x 19 in x 11 in)
Shipping Weight	7.5 kg (16.5 lb)

Pretium® Connector Housing (PCH)

four rack units, holds 12 CCH connector panels



Shipping Information

Package Contents	Housing; installation guide; 12 blank panels; unit ID label; port identification label for 12 panels; 4 routing clips; 8 #10-32 x 50 screws; 4 #12-24 x 50 screws; 12 1/8 x 4-in tie wraps, white; 3 spiral wraps, 2 ft; central member strain-relief clamp kit; bracket for mounting UCC clamp; universal cable clamp (UCC) kit with 5 cable inserts
Dimensions (HxWxD)	279.4 mm 562.1 mm 482.6 mm (11 in 22.13 in 19 in)



Corning Optical Communications LLC • PO Box 489 • Hickory, NC 28603-0489 USA

800-743-2675 • FAX: 828-325-5060 • International: +1-828-901-5000 • www.corning.com/opcomm

A complete listing of the trademarks of Corning Optical Communications is available at www.corning.com/opcomm/trademarks. All other trademarks are the properties of their respective owners. Corning Optical Communications is ISO 9001 certified.

© 2016 Corning Optical Communications. All rights reserved.

