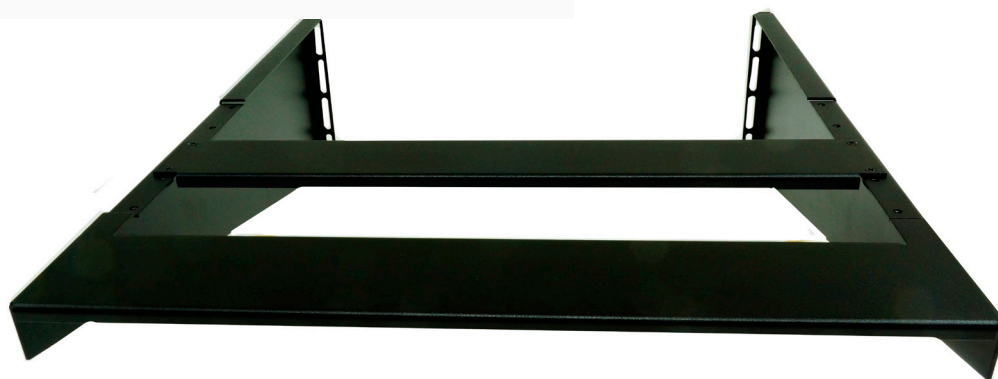


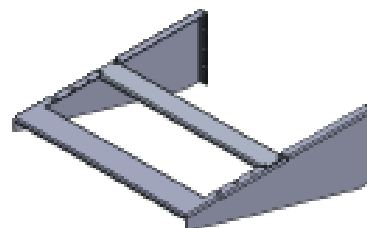
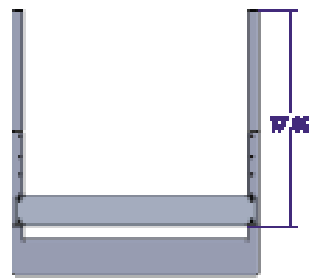
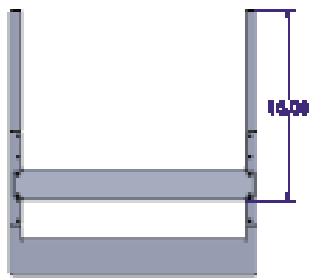
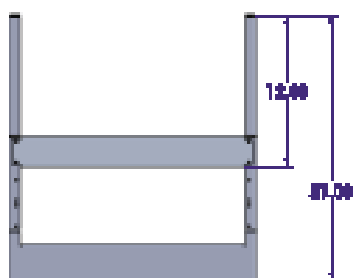
FEATURES

- Adjustable cross bar support 12" (305mm) to 21" (533mm)
- Black Powder Coated, Strong Lightweight 0.063" Aluminum
- Recommended for supporting up to 40lbs
- Wide stance to allow mounting of additional equipment directly underneath
- Provides additional support to heavier interconnect enclosures and active equipment



Economical support cantilever shelf designed for 19" two post free standing racks can reduce fatigue on mounting brackets when heavy, active equipment can only be fastened flush to the front of the rack. This support shelf has a fixed 2" (50mm) support cross bar at 18.5" to 21" and an additional adjustable support cross bar at 12"-17" for heavier shorter equipment. Shelf mounts to rear of rack rails and straddles opening width so enclosures and equipment can be mounted below active gear to maximize rack space. Made of strong, lightweight aluminum, powder coated color black, recommended to support equipment up to 40lbs.

TECH DRAWING



FIS ENCLOSURE SUPPORT SHELF



ORDER INFORMATION

| | |
|-----------------|--|
| F1RMSSXB | Support Shelf for Rack Mount Equipment/Enclosure, (19" free standing rack) |
|-----------------|--|