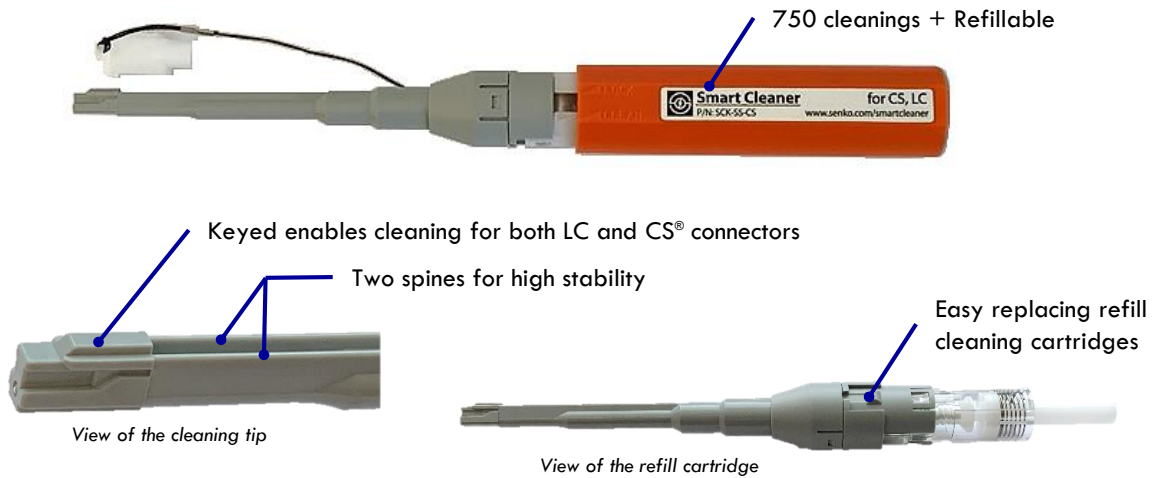


SMART CLEANER CS-LC

END FACE CLEANER FOR CS® AND LC CONNECTORS

TYPICAL APPLICATIONS INCLUDE

- Cable Assembly Production
- Field Installations with LC and CS® interconnects
- Network Equipment Production
- Engineering and Research Labs



SENKO PART NUMBER FOR CLEANER

SCK-SS-CS

SENKO PART NUMBER FOR REFILLS

SCK-SS-CS-R

DIMENSIONS (IN BOX CLEANER)

Length:	25.0cm (9.8")	Height:	4.0cm (2.0")
Width:	3.0cm (1.2")	Weight:	57g (2oz)

FEATURES

- Cleans both LC and CS® connectors in adapters and unmated assemblies.
- Key features of cleaning tip open most internal shutter LC adapters
- RoHS and REACH compliant with no shelf life or restrictions on storage or shipments
- Works for UPC and APC polished end faces.
- Using the replacement refill cartridges for reducing cost per clean
- Refills are sold 3 to a box
- Cleaner locks up at end of life to alert operator.

CS® is registered trademark of Senko Advanced Components.

Check Out the  **SENKO NEWS CHANNEL** on  **How To Use Video Demonstration.**

SMART CLEANER CS-LC

Cleaning In Adapter LC End Faces:



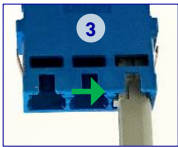
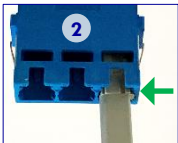
- 1 Place the white end cap into the handle.
- 2 Insert the cleaner into the adapter port and push forward 1X to clean the end face.

Cleaning Unmated LC End Faces:



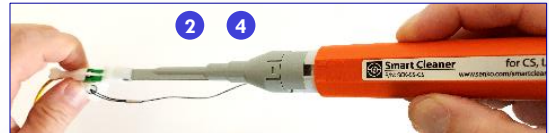
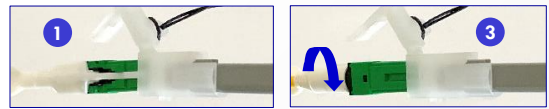
- 1 Open the lid on the white end cap and insert the LC connector.
- 2 Push cleaner forward 1X to clean the end face.

Cleaning In Adapter CS Duplex End Faces:



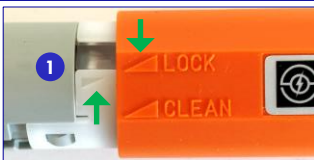
- 1 Place the white end cap into the handle.
- 2 Turn the key 90° and insert into the port and push 1X to clean the end face.
- 3 Turn the key 180° and insert into the port and push 1X to clean the end face.


Cleaning Unmated CS Duplex End Faces:



- 1 Open the lid on the white end cap and insert the CS Duplex connector.
- 2 Push cleaner forward 1X to clean the end face.
- 3 Rotate the CS connector 180° and return the connector into the white end cap.
- 4 Push cleaner forward 1X to clean the end face.

FEATURES



- 1 Rotate the orange handle to align the two arrows  to go into Lock mode.
- 2 Hold the orange handle stationary and pull back on the gray cleaning cartridge.
- 3 Place the replacement cartridge into the orange handle. Make sure you align the gray bump into the slots of the white mounting ears in the handle.

SENKO ADVANCED COMPONENTS, INC.

www.senko.com

AMERICAS

US EAST 1.888.32.SENKO Sales-Americas@senko.com
US WEST 1.858.623.3300
TEXAS 1.972.661.9080

BRAZIL

BRAZIL +55.21.3736.7065 Sales-Brazil@senko.com

AUSTRALIA & PACIFIC REGION

Australia +61.0.3.9755.7922 Sales-Asia-Pacific@senko.com

JAPAN

TOKYO +81.0.3.5825.0911 Sales-Japan@senko.com

ASIA

HONG KONG +852.2121.0516 Sales-Asia@senko.com
SHANGHAI +86.21.5830.4513
SHEZHEN +86.755.2533.4893

EUROPE

UK +44(0)1256 700880 Sales-uk@senko.com
POLAND +44(0) 7796444488
SPAIN & PORTUGAL +34 678042829 Sales-Iberia@senko.com
GERMANY +49(0)15117683072 Sales-Germany@senko.com
ITALY +39 338 8919089 Sales-Italy@senko.com
FRANCE +44 7939364565 Salesfrance@senko.com
OTHER +44(0) 1256 700880 Sales-Europe@senko.com