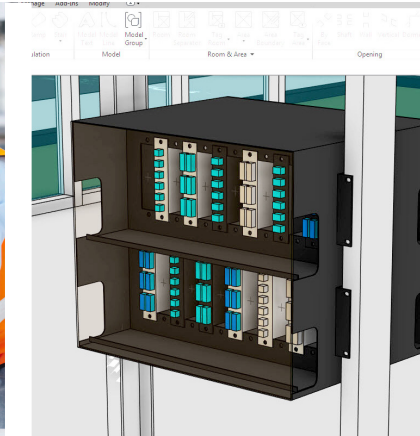




# Communications Fiber Optics

FIS Distribution Solutions



800-5000-FIS(347) / 315-736-2206

[www.fiberinstrumentsales.com](http://www.fiberinstrumentsales.com)

Contact your Sales Representative to receive our full line catalog by mail.

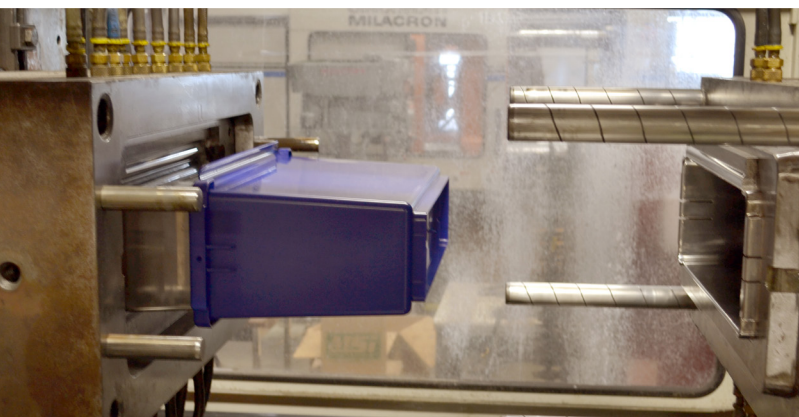
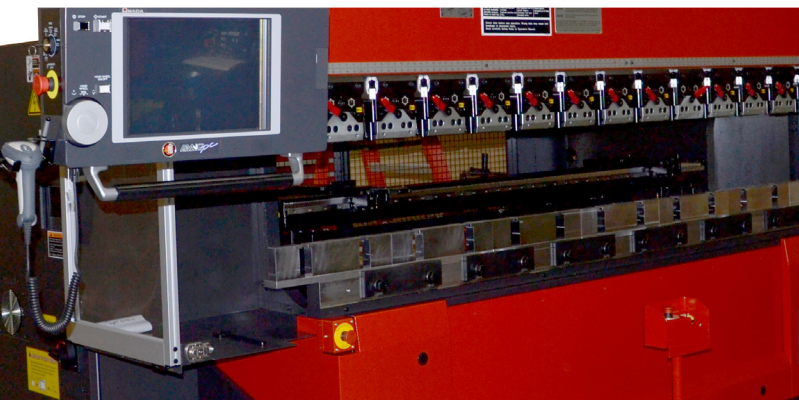
Scan the QR Code to download the catalog to your smartphone or tablet.

# Fiber Instrument Sales

**Experience. Commitment. Innovation.**

Fiber Instrument Sales has delivered fiber optic products world-wide since 1985. As a full-line distributor and manufacturer, FIS maintains one of the largest product inventories in the industry.

From engineering specialty fiber optic components, to equipment rentals, to its highly-acclaimed customer training through FIS University, FIS and its highly trained sales staff are nationally and internationally recognized as the fiber industry's "premier problem solvers."



## 01 Quality Products

Products manufactured in USA. FIS prides itself on manufacturing as many fiber optic interconnect products in the USA whenever possible to maintain control on delivery, costs and engineering improvements. With the addition of new Amada manufacturing equipment, FIS now adds a full line of interconnect rack mounts and wall mount enclosures.

## 02 Material Cost Savings

FIS is able to decrease the overhead on manufacturing and increase the savings to end users. Creating new products from concept to production within the FIS family of companies provides extreme cost savings, and eliminates outsourcing and transportation expenses. FIS is vertically integrated with access to precision machining, injection molding, plastic extrusion, metal fabrication and custom assembly.

## 03 Innovative BIM Products

Building Information Modeling (BIM) allows a virtual information model to be handed from the design team to the contractors and then onto the owner. Utilizing a single model reduces obstacles and keeps information organized when a new team takes ownership of the project. All models available at no cost.

## 04 Concept to Product

FIS's extensive resources facilitate a concept to product development cycle. This enables us to work closely with the customer and quickly implement changes throughout the process. FIS is able to design, manufacture and customize each product to meet your specific needs. With custom capabilities available, unique features can be added to any interconnect item.

## 05 Customizable Options

FIS manufacturing facilities include the abilities to apply customized powder coat colors, laser etched designs, and vivid silk screened logos. These features allow the customer to create a unique brand for their products.

## 06 Industry Leading Warranty

Warranty provides the partnership of designers, contractors and facility owners with confidence the passive cabling system will meet network requirements for desired bandwidth speeds as well as future expansion. FIS respects all manufacturers that together provide the solution, and recognize partner manufacturers on cable, connectivity, hardware and testing.



## Deluxe Wall Mount Enclosure

2, 4, 8 Panel

The FIS Deluxe Wall Mount is designed for high density splicing and patching. Constructed from durable 14 Gauge Aluminum, these enclosures are lightweight and easy to install. The integrated splice tray mounting bracket and cable management rings keep fibers protected and organized. Open S-shaped cable entry ports on the top and bottom allow cables to be routed freely in and out of the enclosure, even after being terminated within the enclosure.

The Deluxe enclosures accommodate up to 8 LGX adapter panels and two splice trays.



Without Splice Tray



## Economy Wall Mount Enclosure

2, 4 Panel

The FIS Economy Wall Mount has been optimized for splicing and patching in very limited space settings. Measuring at just 12" wide and 10" high, this enclosure accommodates up to 4 LGX adapter panels and two splice trays. The four cable entry holes feature dust proof grommets to keep the enclosure and cables safe. Two removable doors allow unhindered access to the splice bay.

Once finished, a lockable inner door provides safe storage of the splice tray and limits customer access to the outer adapter panels.



Without Splice Tray

### Custom Built Options

#### Individual Logos

*Laser Etching, Silk Screening, High Tack Stickers*

#### Port Labeling

#### Unique Colors

*Electrostatic Powder Coating Available in Any Color*

#### Construction Materials

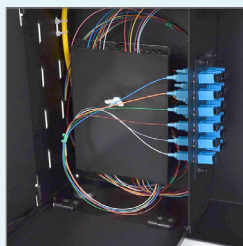
*Aluminum or Steel*

#### Pre-Loaded Ports

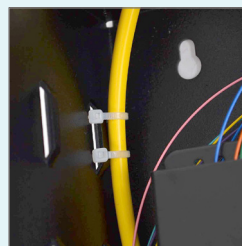
*LGX Adapter Panels, Pigtails, Snap Packs, Cassettes*

#### Doors

*Metal or Lexan*



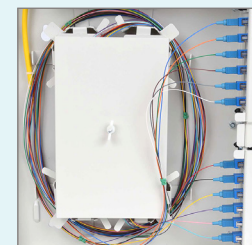
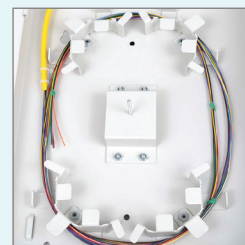
Bridge Stances for Cable Management

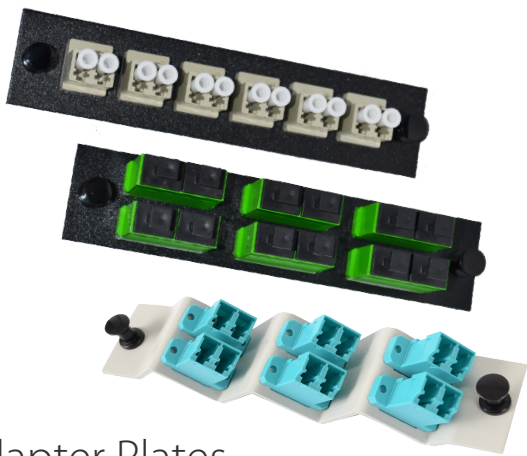


Cassettes in Any Port



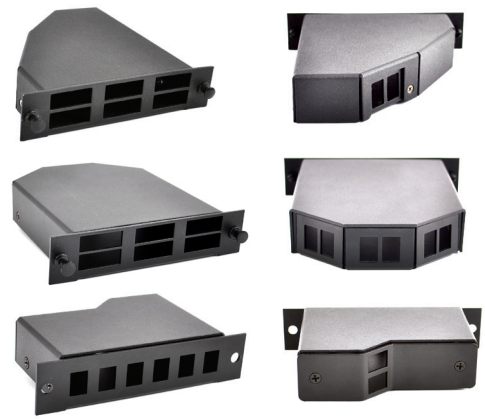
Splice Tray Mounting Bracket and Integrated Cable Management





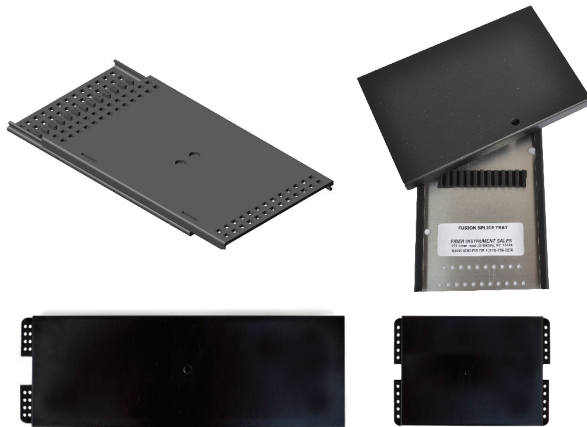
## Adapter Plates

All adapter plates conform to the industry standard LGX footprint. The plates easily snap into all FIS wall mount and rack mount enclosures. Varying connector styles are available, including SC Duplex, LC Duplex and LC Quad for high density applications.



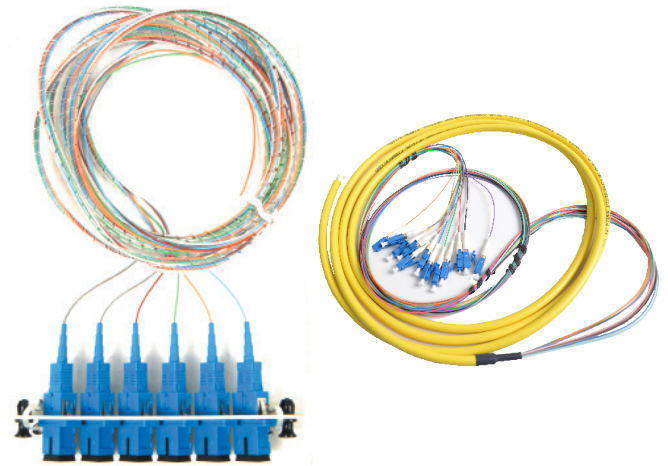
## MTP Modules

The MTP Module is a pre-terminated, pre-tested module system that allows for simple installation of MTP backbone cables with a transition to LC or SC connectors. It eliminates the need for in the field terminations, reduces installation time, and simplifies cable management. The LGX cassettes come in various designs to fit the installer's specific needs.



## Splice Trays

FIS offers a variety of metal splice tray sizes and a dielectric polymer tray to fit into different sized applications. Standard heat shrink fusion splice, mechanical splice, and bare fusion splice holders are available. Splice trays can be secured to either wall or rack mount enclosures using the included mounting hardware. The trays also include cable tie down holes to secure incoming and outgoing fibers. There is also an option of using a clear plastic cover for quick assessment of fibers.



## Snap Packs™

These pre-terminated adapter panels provide convenience to technicians splicing into fiber distribution frames. Available in 6 or 12 fiber bundles with TIA-598-A standard color code, these bundled fibers provide cable management from patchpanel to splice bays. Custom lengths and different connector style adapter panels are available.

## Flush Mountable Patch Panels

The 19" flush mountable patch panel is offered in 1RU and 4RU sizes, with a capacity of up to 12 LGX adapter plates. For specific applications, connector ports can be built directly into the panel and replace the blank LGX adapter slots. These flush mount panels are also available as large cassette style enclosures, which offer additional protection to routed fibers.



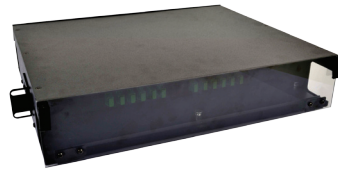


1RU Rack Mount Enclosure

## Rack Mount Enclosures

FIS rack mount interconnects offer high density patch and splice capabilities in an organized, secure enclosure. Slide out trays and removable front and back doors give technicians easy access to the patch bay. Spring loaded stop latches keep the tray securely in place when retracted. Cable organization features include bridge stances, removable retention brackets and cable retention rings.

FIS offers 1RU, 2RU, 4RU and 9RU rack mount enclosures, with the capacity to accept between 1 and 24 LGX adapter plates. Additional brackets can be used to flush mount the enclosure or have it mounted in a 23" rack.



2RU Rack Mount Enclosure with Lexan Door



4RU Rack Mount Enclosure



1RU Rack Mount Swing Out Patch Panel



Closed

## Rack Mount Swing Out Patch Panels

The swing-out patch panel gives easy access to the patch and splice bay. Multiple cable retention brackets allow for convenient cable routing options. These units can be flush mounted or 3.5" protruded without additional accessories.



2RU Rack Mount Swing Out Patch Panel



Closed

## Custom Built Enclosures

### Individual Logos

*Laser Etching, Silk Screening, High Tack Stickers*

### Port Labeling

### Unique Colors

*Electrostatic Powder Coating Available in Any Color*

### Construction Materials

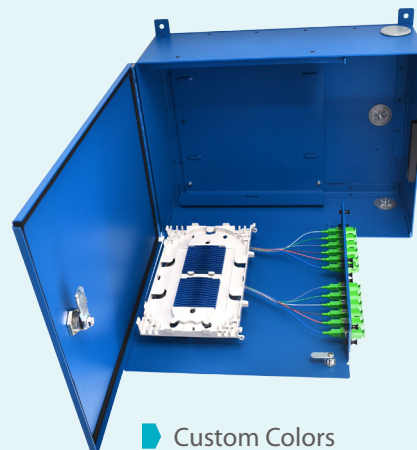
*Aluminum or Steel*

### Pre-Loaded Ports

*LGX Adapter Panels, Pigtailed, Snap Packs, Cassettes*

### Doors

*Metal or Lexan*



Custom Colors



Port Labeling



## NATION'S LEADING FIBER OPTIC DISTRIBUTOR

All Major Lines | \$10 Million Inventory | Over 7,000 Products In-stock

## CUSTOM MANUFACTURING

Test Equipment | Custom Fiber Optic Assemblies | Custom Preloaded Hardware

## INDUSTRY LEADING FIBER OPTIC TRAINING

Fiber Optic I & II | Fiber To The x (FTTx)

## EQUIPMENT RENTALS & CALIBRATION



**Contact your Sales Representative to receive our full line catalog by mail.**

Scan the QR Code to download the catalog to your smartphone or tablet.



[www.fiberinstrumentsales.com](http://www.fiberinstrumentsales.com)

**800-5000-FIS(347)**  
**(315) 736-2206**

161 Clear Road, Oriskany, NY 13424  
Outside the US: 1-315-736-2206  
Email: [info@fiberinstrumentsales.com](mailto:info@fiberinstrumentsales.com)