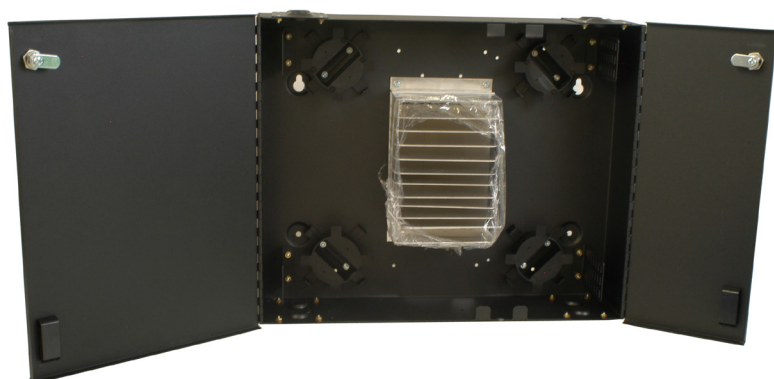


FIS 288 PORT WALL MOUNT ENCLOSURE



F1-SP288



FEATURES

- Supports Up To 288 Fibers
- Used For Splicing Only
- Holds 12 Splice Trays Fusion or Mechanical
- Heavy Duty 16 Gauge Steel
- Double Metal Doors Lock On Both Sides
- Locks and Keys Included
- Labeling Systems
- Dust Proof Grommets
- Radius Slack Holders
- Cable Management Hardware is Included Tie wraps, velcro, plastic ring, slack storage, ground lug

Manufactured with 16 gauge steel, this indoor enclosure provides housing for up to 288 single fusion splices. Double doors lock on both sides and cable management hardware is included. Use F1-SPL24 splice trays to utilize maximum capacity. Splice trays not included. Holds 12 splice trays.

SPECIFICATIONS

Dimensions - H x W x D	17.375" x 21.25" x 4.25"
Weight	23 lbs
Color	Black Powder Coat
Material	16 Gauge Steel

ORDERING INFORMATION

F1-SP288	Wall Mount Splice Enclosure, Black, Holds up to 12 Splice Trays
-----------------	---

RECOMMENDED SPLICE TRAYS

F1-SPL12	Metal Splice Tray, 12 Position, Fusion Splice Chip, 6.5"L x 4.7"W x .42"H
F1-SPL24	Metal Splice Tray, 24 Position, Fusion Splice Chip, 11.72"L x 3.99"W x .42"H
1120-SSTA	Metal Splice Tray, 12 Position, Multiple Splice Chips, 6.5"L 4.75"W x .05"H
2000-SSTA	Metal Splice Tray, 24 Position, Multiple Splice Chips, 11.75"L x 4"W x .05"