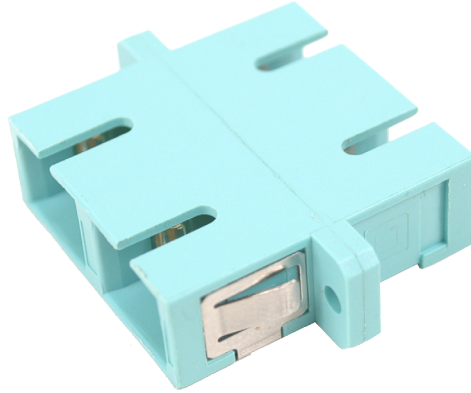


FIS SC DUPLEX MATING SLEEVES



The FIS SC adapters are designed for optimal performance. We offer a bronze sleeve version for PC connectors. The zirconia sleeve versions are designed for high end UPC and APC applications

Applications include CATV, Data Communications and telecommunications networks.

SPECIFICATIONS

Body	ABS Thermoplastic
Operating Temperature	-40°C to 85° C
Excess Loss	< or = .1dB: F1-3810, F1-4800 .2dB F1-3800
F1-8600ET	Beige Housing - Bronze Sleeve
F1-8620	Black Housing - Bronze Sleeve
F1-8650	Aqua Housing - Bronze Sleeve
F1-8601	Blue Housing - Zirconia Sleeve
F1-8701	Green Housing - APC - Zirconia

TECH DRAWING

